

## Upcoming Events!

- Construction 10-Hour
- Violence in the Workplace Webinar Feb. 13
- Cranes & Derricks in Construction Webinar Mar 13
- Regional Safety Summit in TUCSON!!! — Mar 20-21

*See Page 4 this issue*

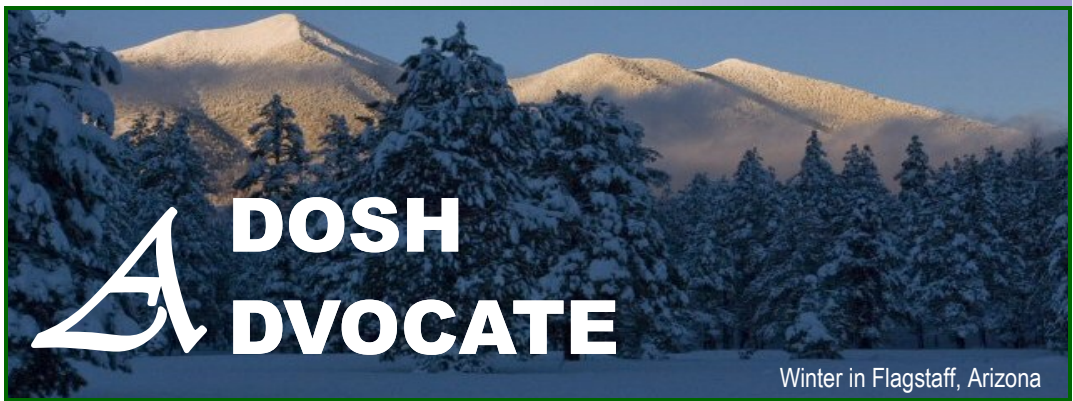
## Inside this issue:

ADOSH News	1
<ul style="list-style-type: none"> <li>• <i>Welcome Larry Gast</i></li> <li>• <i>Consultation at Facilities and Maintenance Conference</i></li> </ul>	
Emergency Eyewash & Combination Eyewash and Shower Units - <i>Steve Weberman, IH</i>	2
Regular Features	3
<ul style="list-style-type: none"> <li>• <i>A Thousand Words</i></li> <li>• <i>In-Box</i></li> <li>• <i>Fatality Investigations</i></li> </ul>	
Tucson Safety Summit What is Due Diligence?	4
Trainer's Corner High School Safety Presentation: Page, AZ	5
Training Calendar <i>January—March 2013</i>	6-7
ATV Death Toll Rising ATV Fatal Mistakes	8
SO or Company Scapegoat? Recordkeeping Reminders	9



Protection of life, health, safety and welfare of Arizona's most valuable assets.

## Arizona Division of Occupational Safety & Health



Winter in Flagstaff, Arizona

## ADOSH Welcomes Larry Gast as Assistant Director

Larry Gast has been named as the new ADOSH Phoenix Assistant Director, upon the retirement of Bill Wright in September. Larry has general oversight responsibility for the elevator, boiler safety sections and the ADOSH compliance sections. He's no stranger to ADOSH having spent the last five years conducting jobsite inspections and fatality investigations as an ADOSH Compliance Safety and Health Officer, or CSHO.



Prior to joining ADOSH in 2007, Larry worked for six years at SCF Arizona as a loss control consultant before he was promoted to Loss Control Administrator. His experience included consulting with hundreds of businesses to

develop ways to prevent accidents and better control losses from workplace injuries. He also worked as a workers' compensation insurance fraud investigator at SCF Arizona for 10 years.

"I've been so blessed to work in safety and to see how important it is to both people and profits," Larry said, about his career. His safety philosophy is that accident prevention is no accident, having witnessed first-hand how company leaders achieved great results when they committed themselves and their energies to making safe work practices a part of every job.

Larry has served as a board member of the Arizona Chapter

of the American Society of Safety Engineers (ASSE) since 2003. He was the Arizona Chapter president in 2011/12, and also is on the board of the Arizona Safety Education Center in Tempe.

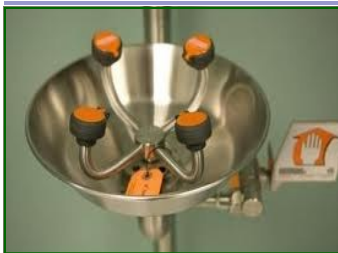
Larry has earned an Associate in Risk Management (ARM). He served as an Army journalist before earning a B.A. in Journalism from the Walter Cronkite School of Journalism and Mass Communication at ASU, and his master's degree in education from the University of Phoenix. He enjoys teaching and has taught safety classes as an adjunct faculty instructor at Mesa Community College.

He and his wife have three children, and two grandchildren, and he says he "tortures them all with his hobby of playing the tenor saxophone."

## ADOSH at the Facilities and Maintenance Conference 11/6/2012



When ADOSH is invited, we like to attend conferences where we can display our booth and get a chance to meet employers and employees, face to face. Rosemary Montanez, Administrative Assistant for the Phoenix Consultation office greets attendees and hands out goodies while Luis Lopez, Consultation Industrial Hygienist answers questions and explains the services available through ADOSH Consultation.



Plumbed eyewash stations for permanent placement.



Portable type eyewash stations can be used on construction and temporary jobsites.

## ANSI Quick Answers

- Eyewash stations should be available in "accessible" locations within 10 seconds of the hazard.
- They should deliver a 15-minute continuous flow.
- They should be located in areas where caustic or hazardous substances are present. Always check all relevant Material Safety Data Sheets to determine if the chemical or substance in your facility requires 15-minute eye flushing.
- They should have an on-off valve, pull strap or door that activates with one single motion in one second or less.
- They should be in a location free of obstructions that inhibit immediate use.
- They must be clearly visible and identified with a sign.

# Emergency Eye Wash and Combination Eye Wash/Shower Units:

By Steve Weberman CET/IH



An employer is required to provide and install an eye wash unit in accordance with 29 CFR 1910.151(c) which requires employers to ensure that suitable facilities for quick drenching or flushing of the eyes and body are provided within the work area for immediate emergency use when the eyes or body of any person may be exposed to injurious or corrosive materials.

Examples of corrosive materials are acetic acid, hydrochloric acid, muriatic acid, sulfuric acid and chlorine (bleach,) just to name a few. A strong acid will have a pH of 4 or less and a strong base will have a pH of 9 or more, you can refer to the Safety Data Sheet for more information. The SDS will also give instructions for the length of time the eyes must be flushed i.e., 15 minutes of continuous flow.

In accordance with the Blood-borne Pathogen Standard 29 CFR 1910.1030(d)(2)(vi) "Employers shall ensure that employees wash hands and any other skin with soap and water, or flush mucous membranes with water immediately or as soon as feasible following contact of such body areas with

blood or other potentially infectious materials;" a faucet mounted eye wash unit is acceptable in medical and dental offices and some laboratories.

Under the American National Standards Institute (ANSI) Publication Z358.1-2009, eye wash units and combination eye wash/shower units should meet certain requirements such as:

1. Providing a minimum solution/water flow time of no less than 15 minutes and for the flow of solution/water to be continuous.
2. There can only be one action to start the flow of solution/water to the eye cups/shower head on the units.
3. Ensure that water temperature is not a hazard within itself. (Not too hot or cold)
4. Ensure that the units are not blocked or obstructed, and as close to the hazard as possible.

Please reference the ANSI Z358.1-2009 publication for further information on the other requirements.

For a copy of a free version of the ANSI Standard use this link: <http://www.eyewashdirect.com/ANSI-Eyewash-Z358->

[Eyewash-Standard-Guides/31.htm?Click=1015&qclid=CJqdiKCB3LMCFQ-f4AodGmAagg](http://www.eyewashdirect.com/s/31.htm?Click=1015&qclid=CJqdiKCB3LMCFQ-f4AodGmAagg)

Eye wash bottles that are from 1 ounce to 32 ounces that hang on a wall in a holder and/or are located in first aid kits are NOT considered an eye wash unit and do not meet ANSI requirements and, in turn, will not meet OSHA standards. Eye wash bottles are useful for rinsing eyes of non-hazardous, non-abrasive substances, dusts or particles; or to aid you while reaching an actual eye



wash/shower unit, but are not a substitute for an actual eye wash unit.

Provide and enforce the use of Personal Protective Equipment (PPE) to protect the eyes, face, hands, arms and any other bare skin areas that are subjected to the likelihood of splash due to corrosive materials, hazardous substances, or body fluids as part of your job duties.



## A Thousand Words... *(or, one of these things is not like the others)*



### In-Box



**Q:** My employer is having us get hearing tests, TB shots, Hepatitis B vaccinations and a few other immunization boosters. They said for us to use our personal health insurance for this. Can they have us bill our insurance for company tests? If the insurance does not cover everything, must they cover the remainder?

**A:** Whether or not your employer has to provide these things for free depends upon your exposures at work. For example, if you are in a position that exposes you to blood or other potentially infectious materials (as defined by the OSHA bloodborne pathogens standard), then your employer must provide the Hep B vaccination series free of charge. Hearing tests would need to be provided, free of charge, if you are exposed

to high noise levels and required to be included within your employer's hearing conservation program.

If you are not covered by the specific OSHA standards and your employer simply wishes to make various tests and vaccinations a condition of employment, then the matter of who pays may be left up to employer/employee negotiations.

**Q:** In a medical office, is it ok to have closed drink containers?

**A:** The OSHA standards prohibit eating and drinking in areas where there is a potential exposure to blood or other potentially infectious materials. The subject standard can be found at 29 CFR 1910.1030(d)(2)(ix). Of course, even if you do not work in an area where such exposures are present, your employer is still within their rights to prohibit

eating or drinking in specific areas.

**Q:** When I was first employed with a manufacturing company, I was told that everyone needed to wear closed-toed shoes and safety glasses every time they entered the manufacturing area. Unfortunately, the requirement has never been enforced. Is there something that can be done?

**A:** OSHA's personal protective equipment standards are dependent upon the hazards to which employees are exposed. Just because an employer mandates protective footwear doesn't necessarily mean that the absence of such footwear is a violation of OSHA standards. If there are hazards which can cause injury to the feet or to the eyes, then protective equipment would be required. You may file a complaint by contacting ADOSH. **602-542-5795**

### "In-box" Sneak Peak

- Who pays for hearing tests & immunizations?
- Can you have closeable drink container in a medical office?
- What can be done if the employer does not enforce PPE policy?

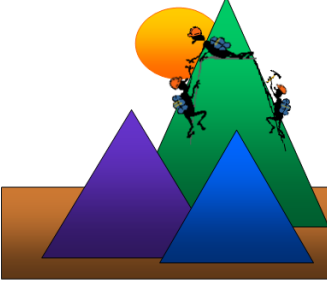
### Occupational Fatalities Investigated by ADOSH

*July 1, 2012 through September 30, 2012*

1) An employee was struck and crushed between a water tank truck and pickup truck.

2) An employee was struck by lightning while working on a rooftop air conditioning unit.

2013 ADOSH  
Regional Safety Summit  
Coming to TUCSON March 20-21  
Go to <http://www.ica.state.az.us> to register  
after January 1, 2013



## Regional Safety Summit Coming To TUCSON ! March 20-21, 2013

ADOSH is bringing our popular Regional Safety Summit to Tucson, finally! The new date is March 20-21. With an emphasis on General Industry, including a 10-Hour class, the two day event will feature a Keynote speaker each morning and one hour classes continuing throughout the remainder of each day.

An Advanced Safety Management Series is offered, three one-hour classes: Learning From Fatalities; Building a Powerful Safety Culture; and Effective Employee Training for safety managers who are ready to "think outside the box."

A track of classes for Maintenance and Custodial work is also offered, including Electrical and Arc Flash classes; Walking Working Surfaces; and Hazard Communication for Cleaners and Disinfectants.

We will be adding a Global Harmonization System Class for those needing some instruction or refreshing on the new standard implementation.

Instruction on BBP/OPIM and Pandemic Influenza (Avian Flu) Preparations will be offered; and it has been one of our most popular classes at the past three Summits.

Vendors will be present to show you the latest innovations and give instruction and demonstrations during lunch hours, if desired.

We will have Construction classes available as well, including Residential Fall Protection and Construction Emergency Action Planning.

At the time this issue of the Advocate goes into publication, we are still working on the registration information. After the first of the year we will have the forms on our website. The 10 hour class fills up fast, so register early! <http://www.ica.state.az.us>



ADOSH Consultant Bill Cooper and Mike Maloney from Carson Sales conduct training regarding Arizona's Residential Fall Protection Law and the newest in fall



## Two New Webinars This Quarter and More Spanish Classes!

We held our first (mostly) successful webinar last quarter, in November, on OSHA Record-keeping. We say mostly successful as there were some sound issues that we were struggling to resolve during the presentation. We had over 30 people signed in to the class!

This quarter we are offering two more webinars, presented once again by Assistant Director Jessie Atencio and Bill Cooper as well. On the date of the webinar you are also welcome to attend in person at the ICA Building (800 W Washington St. Phoenix.)

Just call 602-542-1769 and register so we can prepare a spot for you. Violence in the Workplace will be broadcast on Feb 13, and Cranes in Construction on March 13. More Spanish language classes have been added as well. Take a look at our calendar!

Traditional Hierarchy  
of Exposure Control Practices



## What is "due diligence" and where can I get some?

Due diligence is the level of judgment, care, prudence, determination, and activity that a person would reasonably be expected to perform under particular circumstances.

Applied to occupational health and safety, due diligence means that employers will take

all reasonable precautions, under the particular circumstances, to prevent injuries or accidents in the workplace.

To exercise due diligence, an employer will implement a plan to identify possible workplace hazards and carry out appropriate corrective actions

to prevent accidents or injuries; utilizing the Engineering, Work Practice and PPE through the Hierarchy of Controls. (See Chart—far left column)

Due diligence is demonstrated by a company's actions before an event occurs, not after.

## TRAINER'S CORNER

Each week we get a couple of calls asking us how a person can become an "OSHA Trainer." The University of California at San Diego (UCSD) brings OSHA Training Institute/UCSD Classes to the Phoenix and Tucson Area throughout the year.

You may want to consider taking the pre-requisite OSHA Standards Classes 510 (Construction), and/or 511 (General Industry); you would then be eligible for enrollment in the Outreach Train-the-Trainer Classes (500 and/or 501) to become an Outreach Trainer. Upon successful completion you would then be authorized to present 10 and 30 hour classes through OTI. These Outreach Trainer classes are often taught here in Arizona. You can see the catalog on-

line at: <http://osha.ucsd.edu/index.cfm?vAction=sacourses3&city=Tempe>

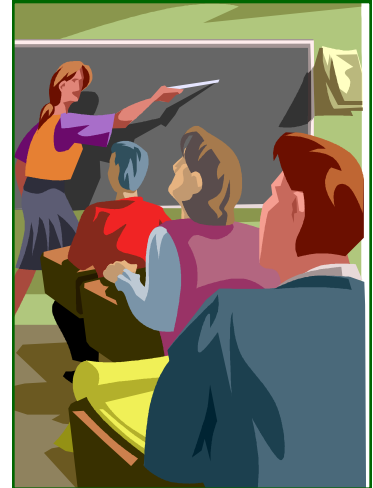
You will see that there are many other OTI classes available here in Arizona. Click on the highlighted text and it will take you to the schedule for that class in the Tempe location. As with all of the OTI classes, tuition fees apply. More information is available at the OSHA website under the "Training" tab or you can follow this link: <http://www.osha.gov/dte/index.html>

Last, but not least, please join us at the free ADOSH Training classes. If there topics you would like taught, let us know! You can access our calendar found online in our ADOSH Advocate Newsletter at: <http://>

[www.ica.state.az.us/ADOSH/Forms/ADOSH\\_AdvocateCurrent.pdf](http://www.ica.state.az.us/ADOSH/Forms/ADOSH_AdvocateCurrent.pdf)

Another training opportunity of which many people are unaware is the FEMA Independent Study Program. There are a number of safety and preparedness classes that would benefit anyone interested in safety management. These classes are free and a completion certificate can be downloaded for printing. You can access the FEMA classes at the following link: <http://training.fema.gov/is/crslist.asp?page=all> The FEMA classes are helpful for those who may be interested in qualifying for an Emergency Manager position to augment their safety and health knowledge. See you in class!

### How can I become an "OSHA Trainer"?



*Trainer Classes are available right here in Arizona through OTI / University of So. California San Diego (UCSD)*

## ADOSH Consultation Goes Back to High School

This November found three ADOSH Consultants walking the halls of Page High School in Page, AZ.

Phoenix CET was invited to present Occupational Safety and Health Training to the Career and Technical Education (CET) programs at Page High School.

Page High Principal Paul Gagnon and Nancy Walker, Career and Technical Education (CTE) Director welcomed ADOSH to their beautiful, spacious campus on November 6th through the 8th, 2012.

ADOSH CET Supervisor Babak Emami, Consultant Toby Sama-



Mandeville found students to be interested and eager to participate in the exchange of information about worker rights and safety. Meeting in individual classrooms, with the instructor

present allowed ADOSH to reinforce the safety modules that had been given earlier in the semester.

Each 45 minute presentation addressed the rights of teen workers and the Labor Laws that protect them from performing work that could expose them to

injury or illness while at work.

Page High School has an active career development program for students, and many of the classes are filled to capacity. Students feel that they are receiving valuable training that will help them attain better jobs and the experience they receive is hands on, skill intensive, and relevant to work in the area.

PHS has an active CNA program with many students enrolled. Michelle Merolla, RN instructs the students per national standards and the training facility is top notch.

The students enrolled in the Culinary Arts, Auto Body, Auto Repair, Welding, Medical Arts, Construction, and Photo and Graphic Arts programs were presented

with a PowerPoint and lecture program that introduced OSHA and identified hazards associated with work in their specific fields. Over 25 presentations were given to approximately 400 students during the three-day event. These PPT presentations are available to educational institutions, upon request, through our Phoenix Office.

Other materials used for the event are available on-line through the CDC Teen Worker Program and OSHA's Young Worker Website at: [www.osha.gov/youngworkers/](http://www.osha.gov/youngworkers/)

ADOSH CET has set a goal of visiting two more High Schools in Arizona this year. If your school is interested in having us visit, contact Consultation Education and Training (CET) Supervisor Babak Emami at 602-542-1634.



# ADOSH Education and Training Calendar Jan-March 2013

Registration for each class begins 30 days prior to the date of the class. Most classes are free of charge but are subject to change or cancellation with out notice. Some classes or seminars listed are not exclusively sponsored by ADOSH and may carry a nominal fee to cover the costs of course materials, space or equipment rental, etc. **NOTE: The phone number or web address listed for each class is the number that participants need to call for registration purposes and may or may not be a direct number to ADOSH or the trainer. Registration Problems? Call 602-542-1769**

## JANUARY 2013

1/2/2013	9:00-12:00	Forklift Train-the-Trainer	2675 E Broadway	Tucson	Ornelas	520-628-5478	ADOSH
1/3/2013	9:00-12:00	OSHA 300 Recordkeeping	2675 E Broadway	Tucson	Ornelas	520-628-5478	ADOSH
1/8/2013	9:00-12:00	Hand and Power Tools	2675 E Broadway	Tucson	Ornelas	520-628-5478	ADOSH
1/9/2013	9:00-12:00	Excavation Safety Awareness	2675 E Broadway	Tucson	Ornelas	520-628-5478	ADOSH
1/10/2013	8:00-11:00	Slips, Trips and Falls - <b>SPANISH</b>	800 W Washington St	Phoenix	Lopez	602-542-1769	R.Montanez
1/10/2013	9:00-12:00	Office Safety	2675 E Broadway	Tucson	Ornelas	520-628-5478	ADOSH
1/11/2013	8:00-12:00	Forklift Train-the-Trainer	3030 N. 3rd St.	Phoenix	Mandeville	602-542-1769	R.Montanez
1/15/2013	8:00-12:00	Forklift Train-the-Trainer	3727 Karicio Lane (SCF)	Prescott	Mandeville	602-542-1769	R.Montanez
1/15/2013	1:00-4:00	OSHA Recordkeeping Workshop	3727 Karicio Lane (SCF)	Prescott	Mandeville	602-542-1769	R.Montanez
1/15/2013	9:00-12:00	Machine Guarding	2675 E Broadway	Tucson	Ornelas	520-628-5478	ADOSH
1/16/2013	8:00-11:00	Sleep and Safety	3727 Karicio Lane (SCF)	Prescott	Mandeville	602-542-1769	R.Montanez
1/16/2013	1:00-4:00	Hazard Communication/GHS	3727 Karicio Lane (SCF)	Prescott	Mandeville	602-542-1769	R.Montanez
1/16/2013	9:00-12:00	Heavy Equip. Safety - <b>SPANISH</b>	1450 N Hohokum Dr.	Nogales	Ornelas	520-988-0135	A. Barcenas
1/17/2013	9:00-11:00	Excavation Safety Awareness	2675 E Broadway	Tucson	Garton	520-628-5478	ADOSH
1/17/2013	7:00 -1:00	<b>Construction 10 Hour Day 1**</b>	800 W Washington St	Phoenix	Cooper/ABA	602-542-1769	R.Montanez
1/18/2013	7:00-1:00	<b>Construction 10 Hour Day 2**</b>	800 W Washington St	Phoenix	Cooper/ABA	602-542-1769	R.Montanez
1/22/2013	9:00-12:00	OSHA 300 Recordkeeping	2675 E Broadway	Tucson	Ornelas	520-628-5478	ADOSH
1/23/2013	9:00-12:00	Excavation Safety Awareness	500 S Central (Conf Rm B)	Florence	Ornelas	520-866-7928	Ana Esquivel
1/23/2013	9:00-12:00	OSHA 300 Recordkeeping Workshop	1971 Jagerson Ave. (Mohave Com College)	Kingman	Mandeville	928-757-0894	Lisa Card
1/23/2013	1:00-4:00	Violence Prevention Healthcare	1971 Jagerson Ave. (Mohave Com College)	Kingman	Mandeville	928-757-0894	Lisa Card
1/24/2013	9:00-12:00	Sleep and Safety	1971 Jagerson Ave. (Mohave Com College)	Kingman	Mandeville	928-757-0894	Lisa Card
1/24/2013	1:00- 4:00	Hazard Communication/GHS	1971 Jagerson Ave. (Mohave Com College)	Kingman	Mandeville	928-757-0894	Lisa Card
1/29/2013	9:00-12:00	Welding/Compressed Gas Safety	2675 E Broadway	Tucson	Ornelas	520-628-5478	ADOSH
1/30/2013	9:00-12:00	Bloodborne Pathogens	2675 E Broadway	Tucson	Ornelas	520-628-5478	ADOSH

FEBRUARY 2013							
2/5/2013	9:00-12:00	Flammable Liquids/Fire Safety	2675 E Broadway	Tucson	Ornelas	520-628-5478	ADOSH
2/6/2013	9:00-12:00	Lockout/Tagout	1070 W Calle De La Casitas	Green Valley	Ornelas	520- 631-1867	Mercedes
2/7/2013	8:00-11:00	Excavation Safety - <b>SPANISH</b>	800 West Washington St	Phoenix	Samaniego	602-542-1769	R.Montanez
2/12/2013	9:00-12:00	Hazard Communication /GHS	2675 E Broadway	Tucson	Ornelas	520-628-5478	ADOSH
2/13/2013	9:00-12:00	Workplace Violence <b>WEBINAR</b>	800 W Washington St	Phoenix	Atencio	602-542-1769	R.Montanez
2/13/2013	9:00-12:00	TBA	921 Thatcher Blvd	Safford	Ornelas	928-428-3652	K. Dominguez
2/14/2013	9:00-12:00	OSHA 300 Recordkeeping	2675 E Broadway	Tucson	Ornelas	520-628-5478	ADOSH
2/15/2013	8:00-11:00	Machine Guarding	3030 N. 3rd St.	Phoenix	Cooper	602-542-1769	R.Montanez
2/19/2013	9:00-12:00	Gen Industry Hazard Recognition	2675 E Broadway	Tucson	Ornelas	520-628-5478	ADOSH
2/20/2013	9:00-12:00	Workplace Violence Prevention	2675 E Broadway	Tucson	Ornelas	520-628-5478	ADOSH
2/20/2013	8:00-11:00	Residential Fall Protection	800 W Washington St	Phoenix	Cooper	602-542-1769	R.Montanez
2/26/2013	9:00-12:00	Confined Space Awareness	2675 E Broadway	Tucson	Ornelas	520-628-5478	ADOSH
2/27/2013	9:00-12:00	Machine Guarding	2675 E Broadway	Tucson	Ornelas	520-628-5478	ADOSH
MARCH 2013							
3/1/2013	8:00-11:00	Excavation Safety Awareness	800 W Washington St	Phoenix	Cooper	602-542-1769	R.Montanez
3/5/2013	9:00-12:00	Excavation Safety Awareness	2675 E Broadway	Tucson	Ornelas	520-628-5478	ADOSH
3/6/2013	9:00-12:00	Scaffold Safety	2675 E Broadway	Tucson	Ornelas	520-628-5478	ADOSH
3/6/2013	9:00-12:00	Sleep and Safety	800 W Washington St	Phoenix	Mandeville	602-542-1769	R.Montanez
3/12/2013	9:00-12:00	Hazard Communication /GHS	2675 E Broadway	Tucson	Ornelas	520-628-5478	ADOSH
3/13/2013	9:00-12:00	Cranes in Construction <b>WEBINAR</b>	800 W Washington St	Phoenix	Atencio Cooper	602-542-1769	R.Montanez
3/14/2013	9:00-12:00	Forklift Train-the-Trainer	2675 E Broadway	Tucson	Garton	520-628-5478	ADOSH
3/15/2013	8:00-11:00	Residential Fall Protection	800 W Washington St	Phoenix	Cooper	602-542-1769	R.Montanez
3/20/2013	8:00-5:00	<b>TUCSON SAFETY SUMMIT</b>	See website to register	Tucson	Staff	520-628-5478	ADOSH
3/21/2013	8:00-5:00	<b>TUCSON SAFETY SUMMIT</b>	See website to register	Tucson	Staff	520-628-5478	ADOSH
3/27/2013	8:30-3:30	<b>Water/Wastewater Worker Safety Seminar ***</b>	Main Library 2951 S 21st Drive	Yuma	Ornelas Mandeville	928-373-1138	D.Robinson
3/28/2013	8:00-12:00	Forklift Train-the-Trainer	800 W Washington St	Phoenix	Cooper	602-542-1769	R.Montanez

\*\* Construction 10 Hour requires that a \$5.00 CASH fee be collected from the student to pay for card processing. The money goes to the OSHA Training Institute at UCSD. Other than this fee, the course is free and limited to the first 40 students who enroll. The class is 2 full days of instruction and the student must be in attendance for the entire time. Phone calls and texting during class are highly discouraged. Testing is required for this class, and the student must be able to read and take a test written in the English language.

\*\*\* The Water/Wastewater Worker Seminar is a full day of training targeting hazards in the specific industry. Topics include: Confined Spaces; BBP & Biohazards, Hazard Communication, Hazard Recognition, Lockout, and other pertinent topics.

NOTES: Please register early for training classes and leave contact information. Some classrooms may be limited in size and will require us to limit enrollment. If there are not enough enrolled for the class (10 or more) or if there is an unexpected emergency or illness, the class may be cancelled. While ADOSH tries to contact each student in the event of a cancellation, we encourage you to call the day before the class to confirm that the class will still be held as scheduled. Call the number listed on the roster.

Please be courteous during the cold and flu season and do not attend the class if you are suffering symptoms of illness. Viruses are highly contagious and we want to keep all students and instructors healthy during this time of the year. *See you in class!*

**ATV Related Deaths Facts**

**300 ATV related deaths occurred in work settings from 1992-2007. Deaths have steadily increased from 11 in 1992 to 41 in 2007. CDC—NIOSH Study**

For more information download : [NIOSH All-terrain Vehicle \(ATV\) Safety at Work](#) fact sheet.



*ATVs are used by land management, pipeline maintenance, ranching, construction and law enforcement agencies such as Border Patrol, and*

## **ATVs at Work: Rising Death Toll** **NIOSH Science Blog**

**Are your employees operating ATVs to perform their job tasks?**

### **Recommended Safe Practices for Employers**

Provide helmet and eye protection for workers and encourage the use of other personal protective equipment such as sturdy boots, gloves, long shirts and pants.

Identify, mark and eliminate if possible hazards such as excavations, trenches, and guy wires that might be present in specific work environments so they are easily seen and avoided by workers on the job site.

Establish operating and maintenance policies that follow manufacturer's terrain guidelines, specified hauling and towing capacity, and passenger restrictions.

Provide employees access to

hands-on training by an ATV Safety Institute instructor or a similarly qualified instructor. Share responsibility with employees on the practices detailed below.

### **Recommended Safe Practices for Workers of All Ages**

Wear a helmet, eye-protection, long shirts and pants, sturdy boots, and gloves

Participate in hands-on training in the safe handling and operation of an ATV.

Conduct a pre-ride inspection of tires, brakes, headlights, etc., and follow the manufacturer's recommendations for the ATV.

Understand how implements and attachments may affect ATV stability and handling.

Never exceed the manufacturer's specified hauling and towing capacity or weight limits and ensure cargo is balanced, secured, and correctly loaded on provided racks.

Be aware of potential hazards, such as trees, ruts, rocks, streams and gullies, and follow posted hazard warnings.

Drive at speeds safe for weather and terrain and never operate ATVs on surfaces not designed for ATVs, such as paved roads and highways.

Never permit passengers on the ATV, unless the ATV has an additional seat specifically designed to carry them.

Never operate an ATV while under the influence of drugs or alcohol.

Carry cell phones and/or GPS devices for off-road work.

## **ATV Fatal Mistakes Investigated by OSHA**

On October 29, 2010, a 26 year old employee was operating a John Deere Gator ATV and he lost control of it. It is unclear if he jumped or was ejected, but the rear of the ATV slam-med into him and pin-ned him between it and a tree. He died at the site.

On June 17, 2010, a 50 year-old employee was last seen by coworkers spraying weed killer on grass. At approximately 4:30 p.m. a coworker noticed an ATV turned over in a ditch on top of the employee. The ATV operator sustained asphyxia and blunt force trauma; he did not have a pulse and

was pronounced dead at the scene. Upon further investigation, it was determined that a Yamaha Kodiak All Terrain Vehicle was traveling on a sloped decline made of loose gravel and dirt, between stacks of lumber and a ditch. The ATV's wheelbase was 48.5 in. wide and the loose gravel measured 48 in. wide.

On August 5, 2010, a 27 year-old employee was collecting soil samples using an Arctic Cat two-wheel drive All-Terrain Vehicle (ATV) to access the site. Following a full day of drawing soil samples, she loaded up the ATV with her

tools to head back to the office. As she attempted to exit a long drainage ditch, climbing a 42 degree slope, the ATV struck a boulder causing her to be thrown from the vehicle. She was stuck in the head by the ATV, killing her. Later examination determined that she died from blunt force trauma to the head. Further, the accident investigation revealed that she was not wearing a helmet despite one being stored in her tool/gear box.

On July 14 2010, an employee performing weed abatement had been operating a Kawasaki All-Terrain Vehicle, ATV,

with a chemical tank attached. He was found on his back on the ground with the bottom brush guard of the ATV across his neck and upper chest area. There were no witnesses. It appeared the ATV was traveling at a downward angle and hit a large bump on the ground with the left side of the ATV, causing it to turn over, crushing and killing the employee.

On November 10, 2007, a 41 year old employee operating an ATV on a paved roadway did not see a cabled off road closure and drove directly into the cable resulting in partial decapitation. (see <http://www.osha.gov/pls/imis/accidentsearch.html> for more)



#### 4 Elements of a Powerful Safety Program



Begin building a powerful safety culture by ensuring your safety officer has management support and commitment.

*"Asking me to overlook a simple safety violation, is asking me to compromise my entire attitude toward the value of your life." - Author unknown.*

Contributed by Angie Rolnik, EHS Manager, Berry Plastics Corporation

## Safety Officer or Company Scapegoat?

*Power vs. Force*

The first element of any successful safety program is Management Commitment.

If a Safety Officer is the sole committed management representative, management may look to the safety officer to answer for every accident and near miss; seeking to assign blame for the incident, rather than to discover the underlying cause.

A Committed Management looks for system failures; safety systems which management controls. Committed



Management understands that the safety officer is only one of the management rep-

resentatives and not the company scapegoat.

Committed Management refuses to play the blame game and accepts responsibility for identifying system failures and engaging in corrective measures to ensure employee safety including the extra time needed for employee training.

Committed Management

budgets sufficient funds for effective safety management, and refuses to short cut, knowing that the only thing cut short is an employee's life or quality of life for an entire family.

Committed Management validates the safety officer and the program by walking-the-walk, not just talking-the-talk.

**Are you forcing your safety officer to manage an entire safety program alone, or is he/she backed by the power that comes from Management Commitment?**

This year we will discuss aspects of each of the four elements of an effective safety program.

## Recordkeeping Reminders

It's that time again when our OSHA 300 Logs need to be totaled and numbers entered onto the OSHA 300A Form. ADOSH is holding Recordkeeping Workshops throughout January to help you with your calculations. See how your DART and TRC compare to the national stats. **Here is what you will need to bring with you to the workshop:**

- Your 2012 OSHA 300 Log
- Your OSHA 101 or 301 forms to match each entry on the 300 Log
- Your 300A Form
- Average number of employees in 2012 including temporary employees
- Total hours worked in 2012 including overtime
- Calculator

### Quick Reminders:

- The OSHA 300A must be posted in employee access areas from February 1 -April 30.
- Arizona uses the OSHA 101 form, not the 301. Federal entities still use the 301 form.
- Do not re-enter a case on your 2013 form if the employee is still recovering from an incident in 2012. Just make any adjustments on your 2012 sheet until the final DART is known.
- The 300 Log is a worksheet. You can cross lines out, notate, or make corrections as needed.

AND...

- You are not alone. We can help. 602-542-1769

### Arizona Division of Occupational Safety & Health



800 W Washington St, Ste 200 Phoenix, AZ 85007

2675 East Broadway Road Tucson, AZ 85716

Phone: 602-542-5795

520-628-5478

Fax: 602-542-1614

520-322-8008

Toll Free: 855-268-5251

*Darin Perkins, Director*

**We're on the WEB!**

**<http://www.ica.state.az.us>**

### ADOSH ADVOCATE

*Published quarterly by the Arizona Division of Occupational Safety and Health for employers and employees of Arizona. The information in this newsletter is provided as a service and should not be considered as the exclusive source of the requirements of the OSHA Standards. This document is in the public domain and we encourage re-printing. Comments and suggestions are welcome.*